



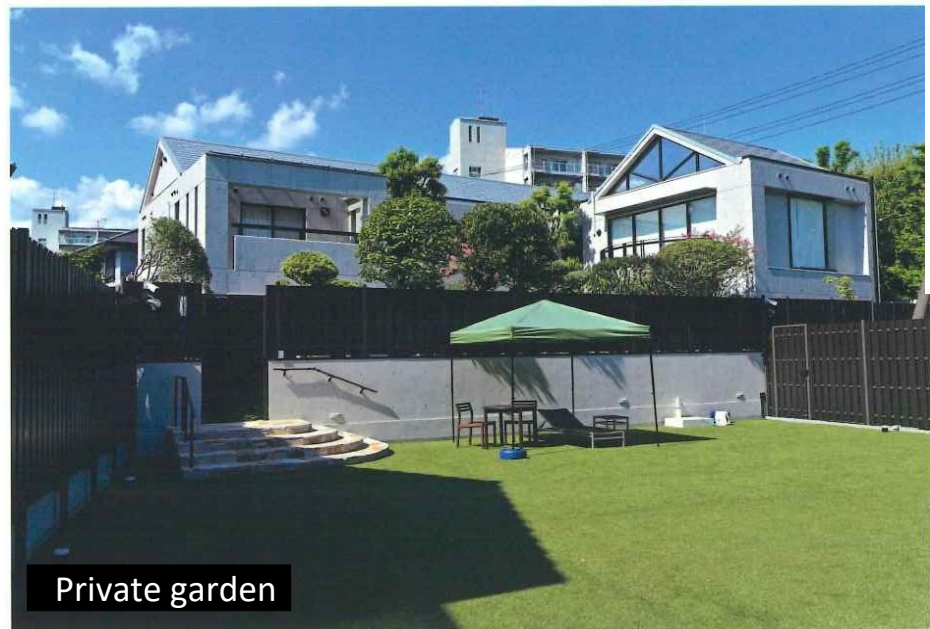
Exterior



Living room



Japanese-style room



Private garden



Bedroom



Dining room

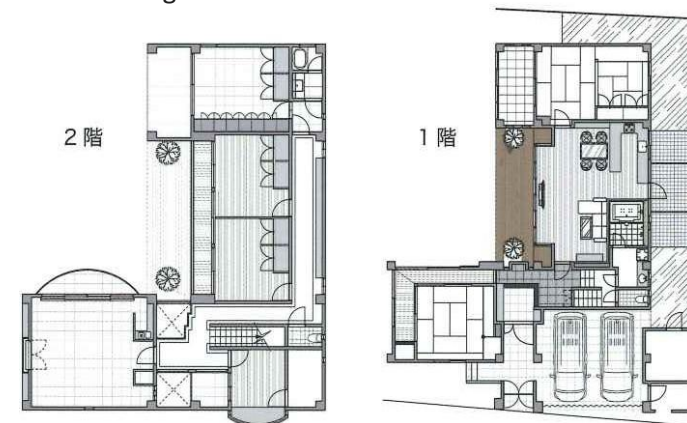
# Luxury Mansion in Furuedai, Suita City, Osaka

Nearest Stations: "Kitasenri" Station,  
"Yamada" Station Layout: 4LDK

**Price: 380,000,000 yen**

## Object summary:

- ◎1-24-18 Furuedai, Suita City, Osaka ◎Freehold
- ◎ Access: 13 min walk to Hankyu Senri Line "Kita-Senri" Station  
18 min walk to Osaka Monorail "Yamada" Station
- ◎ Land use: Residential
- ◎ Zoning: Category I Low-Rise Residential Zone
- ◎ Urban Planning: Within city planning area
- ◎ Built: September 1991
- ◎ Structure: 2 stories (Reinforced Concrete, Copper roof)
- ◎ Land area: 742.23 m<sup>2</sup> ◎ Floor area: 276.75 m<sup>2</sup>
- ◎ Building coverage ratio: 40% ◎ Floor-area ratio: 80%
- ◎ Water: Public / Gas: City gas / Sewer: Public sewer
- ◎ Parking: 4 outdoor parking spaces  
2 indoor shuttered garage spaces
- ◎Vacant ◎Negotiable



\*If the floor plan and the actual situation differ,  
the actual situation takes precedence.

## Mash Co., Ltd.

3-11, Fujishirodai 2 chome, Suita City, Osaka Prefecture  
Osaka Prefecture Governor License (2) No. 58189  
Main Line (Japanese): 06-6450-6188  
English and Chinese Service Hotline : 090-9879-4615

- ◎Convenient access to the city center with 3 train lines available
- ◎3 Japanese-style rooms, 4 Western-style rooms, spacious LDK,
- ◎Dog run and private garden
- ◎ 4 outdoor parking spaces, 2 indoor shuttered garage spaces